



An Internationally Accredited School

Brighton Primary news

brighton.vic.edu.au brighton.ps@brighton.vic.edu.au Principal: Anny Lawrence Phone: 9592 0177 Fax: 9593 1642

from Anny

What is the process for grade placement?

The opportunities to build relationships and the sense of belonging underpin the process of allocating students to classes. The process has been developed collaboratively with staff and is reviewed annually.

Bright Kids Brighton Primary

The process of class placement begins with this newsletter.



1. The first step is to invite parents to write to me with any educational concerns or needs in regard to their child/ren's class placement for 2017. This information must be in writing, addressed to the principal and received by Friday October 31, 2016.
2. In late October, early November each child nominates five students when they are asked: *Who are five students you think you can or want to work well with and you would like us to consider being with you in your new class next year?*
3. Students write their choices on a proforma and they are photocopied. The original is placed in the student file and teachers check the file for previous parent requests.
4. Then, teachers work individually and in year levels to form classes using the following criteria:
 - each student has one student listed in his or her proforma and if that can't be done the parents are contacted and the situation is explained to them
 - there are groups of like-minded students (ie students working at the same level academically)
 - students' social and emotional needs are taken into account
 - students with special needs are placed with a supportive group
 - students with behavioural needs (ie those who require extra support to access the curriculum) are carefully placed
 - a balance of gender
 - a mix of students from previous classes.
5. Following this step, the parent letters are given to team leaders, then each letter is placed on the individual student's file.
6. Next, the specialist teachers look at class lists and identify any issues they have encountered with students or groups of students.
7. Finally, teachers review the lists a number of times to ensure all criteria are met before finalising classes. The final class lists along with the parent information are passed to leadership for input and to deal with confidential issues.

Lost Property

Lost property is stored in the cupboard near the Uniform Shop.

Please check through it if anything goes missing.



The Department of Education and Training does not endorse the products or services of any advertiser in this newsletter.

No responsibility is accepted by the Department for the accuracy of information contained in advertisements or claims made by them.



Like us on Facebook to stay in touch with the latest news at BPS — search Brighton Primary School—An Internationally Accredited School in your Facebook search bar.



Occupational Health and Safety

If you notice a potential OH&S issue around the school please report it to the office ASAP so that it can be addressed.

Bill Kolivas
Facilities Manager

MONDAY MORNING ASSEMBLY 10th October 2016

Parents are welcome to attend our Monday morning assemblies on the Junior Oval at 9.00am.



Congratulations to next Monday's PYP Attitudes award recipients:

0A	Gracie E.
0B	Noah C.
0C	Lucas S.
0D	Reggie C.
0E	Thomas R.
0F	Frankie O.
1A	Nam T.
1B	Amelie K.
1C	Charly L.
1D	Aria S.
1E	Maddison G.
2A	Harry W.
2B	Charley R.
2C	Audrey C.
2D	Asher W.
2E	Ty S.
3A	Harry R.
3B	Holly C.
3C	Josh T.
3D	Thomas P.
4A	Rayna Pl
4B	Kaia K.
4C	Finn P.
4D	Milla R.
5A	Sasha P.
5B	Rasha Y.
5C	Lucas J.
5D	Molly G.
6A	Massimo M.
6B	Evan S.
6C	Ellie H.
6D	Emily C.



National Bandana Day Friday 28th October.

Mr Kolivas is selling **colourful** bandanas for \$4 on behalf of CanTeen.

This organisation supports young people with cancer.

If you or your child would like to purchase a bandana please see Mr Kolivas in Room 10, before or after school or at recess and at lunchtimes.



New Foundation Enrolments
... for 2017 are now due.

Pick up a form from the office and return ASAP.

School Banking

Every Wednesday

Bank books need to be delivered to the Staff Room as close to 9am as possible.



A Reminder to all Parents

Teachers are on Yard Duty from
8:45am each morning.

After school Teachers are on Yard
Duty from 3:30pm to 3:45pm.

In the interest of your child's
safety, please ensure that you do
not leave your child unattended
before and after school outside of
these times.

Thank you for your assistance.



MESSAGE FROM NURSE CECILE

Asthma and Thunderstorms – Advice for Parents



Pollen counts are high in spring and often we have thunderstorms during this time. Research has indicated that thunderstorms disturb ground-level pollen grains, bursting the pollen grains and making the allergens small enough to be inhaled into the lungs. There is also evidence that after rain and during wet conditions there are a larger amount of fungal spores in the air. These can act as a trigger for asthma symptoms. Here is some advice for parents to help manage their child's asthma.

What can you do?

- Notify the school if your child has asthma – please make sure our records are kept up to date.
- Have an up to date Asthma Care Plan for your child and provide it to the school. These forms are available from the health centre. They need to be updated annually
- Always ensure your child has their reliever medication and spacer at school and ensure they are clearly labelled. These will be kept in the classroom.
- Ensure preventer medication is taken as prescribed. Seek advice from your GP if symptoms are persistent.
- If asthma gets worse during thunderstorms try to stay indoors.
- Let me know if your child has recently been unwell and needs changes to their management plan.

For more information asthma please see www.asthmaaustralia.org.au

Please contact me if you have any concerns. Thank you.

Nurse Cecile

<https://docs.google.com/forms/d/e/1FAIpQLSeHNAP0MjtYVEULeamlBtgAfLA8zVnZyonG7RshCmAZ-tWTaw/viewform>

Dear Mum and Dad,

I would like to invite you to our gardening Working Bee organised for Saturday 8th October, for parents of Year 2 and Year 5 students.

The Working Bee starts at 9.00am and ends at 12 noon with a sausage sizzle for parents and students. Cordial, wine and beer will be available.

If we have an hour or two to spare can we go? We can complete a few jobs and you can chat and socialise with the other parents.

Weather permitting, some of the jobs we can do are pruning shrubs, sweeping leaves, weeding, clearing shallow drains of leaves, turning over and spreading soft fill under play equipment.

Basically, it's a general clean and freshening of my lovely school yard.

Please bring any of the following that you think may be useful for you and me to use on the day: gardening gloves, rake, broom, spade, fork, wheelbarrow, blower vac, secateurs, or other gardening tools.

Please complete the slip below by Wednesday 5th October and I'll return it to Mr Kolivas so that he will know how many sausages and drinks to order.

I hope we can attend, even for a short time.

Love,

Yes Mr Kolivas, we will attend the Working Bee on October 8th. Please cater for

.....adults andchildren.

Parent's name (print).....

Student's name.....



The Prime Minister of New Zealand
Mr John Key
Parliament Office
Private Bag 18888
Parliament Buildings
Wellington 6160
NEW ZEALAND

Dear Prime Minister

My name is Zara [redacted] and I am 7 years old.

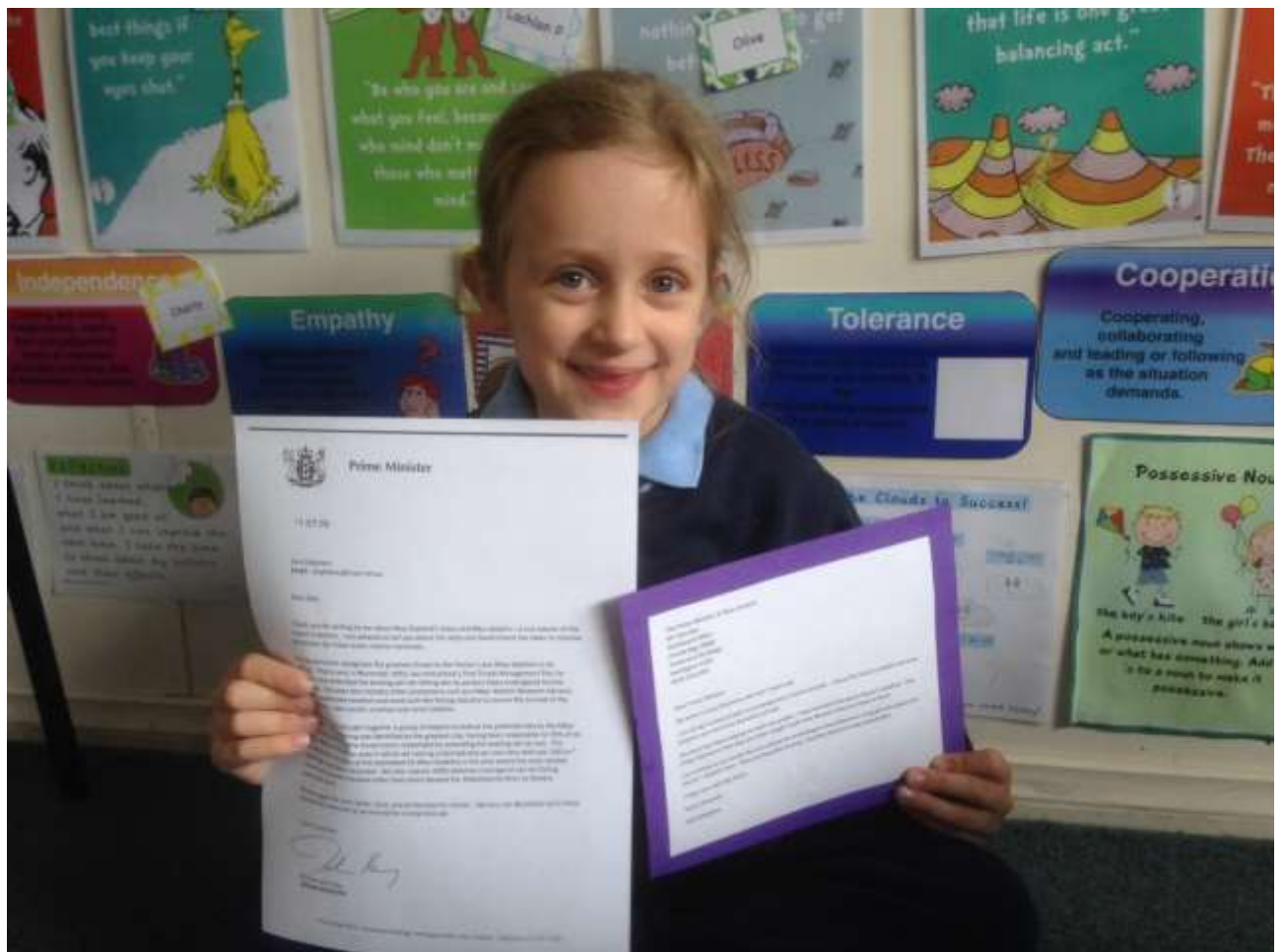
I am doing a school project on endangered or extinct animals. I chose the Hector's dolphin because dolphins are one of my favourite animals.

My mum has been helping me with my project. I have learned a lot about Hector's dolphins. One thing I learned is that they are often caught in gill nets, because they live close to shore.

I am writing to you to ask that you please do something to stop fisherman using gill nets where the Hector's dolphin lives. They are beautiful animals, and they deserve to be looked after.

I hope you will help them.

Yours sincerely
Zara [redacted]





Prime Minister

15 SEP 2016

Zara ~~XXXXXXXXXX~~
~~XXXXXXXXXXXXXXXXXXXX~~

Dear Zara

Thank you for writing to me about New Zealand's treasured Māui dolphin – a sub-species of the Hector's dolphin. I am pleased to tell you about the steps our Government has taken to improve protection for these iconic marine mammals.

The Government recognises the greatest threat to the Hector's and Maui dolphins is set netting. That is why in November 2013, we announced a final Threat Management Plan for dolphins and extended the existing set net fishing ban to protect these endangered marine mammals. The plan also includes other protections such as a Maui dolphin Research Advisory Group to undertake research and work with the fishing industry to ensure the survival of the Maui dolphin – the world's smallest and rarest dolphin.

The Government brought together a group of experts to look at the potential risks to the Māui dolphin. Set net fishing was identified as the greatest risk, having been responsible for 95% of all recorded deaths, so the Government responded by extending the existing set net ban. This effectively doubled the area in which set netting is banned and we now have well over 100 km² of protection for each of the estimated 55 Māui dolphins in the area where the most reliable sightings have been recorded. We also require 100% observer coverage on set net fishing vessels up to seven nautical miles from shore beyond the Waiwhakaiho River to Hawera protected area.

Thanks again for your letter, Zara, and all the best for school. Like you, we absolutely want these wonderful creatures to be around for a long time yet.

Yours sincerely

Rt Hon John Key
PRIME MINISTER



Looking for a new career as Teachers Aide or Childcare Educator?

bestchance Child Family Care, which runs bestchance Training, is a registered charity which has been providing support to children and families since 1895. Unlike other training organisations, we only offer classroom based training delivered by industry qualified trainers to ensure the highest standards. Based in Glen Waverley, our small class sizes and on-site facilities offer a 'hands on' approach to learning.

Certificate III in Education Support
(CHC30213)

Certificate III/Diploma of Early Childhood Education and Care (CHC30113 & CHC50113)

*These courses are delivered with Victorian and Commonwealth Government funding. We encourage people from diverse backgrounds and disabilities to apply for this training. TQID 3695



bestchance.org.au | 1300 2 AIM HIGH

BAM Allstars
dance crew

Social, inclusive, all abilities dance classes

Weekly classes in Brighton, Seaford & Frankston for ages 7 through to adult enrolments now open for Term 4

New pre-schoolers class starting soon!

Call Lisa on 0425 721 848 or go to our website:
www.bamallstars.org.au

PARENTS

Log on to Compass every week to ensure you are up to date with excursion notices!!

The cut-off for consent for an event is 2 days prior to the event or your child WILL miss out!!!

HELP RAISE MONEY FOR THE NATIONAL BREAST CANCER FOUNDATION BY JOINING US FOR A FUN EVENING OF

Shopping & Champers

FRIDAY OCTOBER 7TH, TICKETS \$25 EACH
 7-11PM AT CITY HALL LOUNGE BAR,
 KINGSTON CITY HALL
 979-985 NEPEAN HWY, MOORABBIN

ENJOY SOME BUBBLES & SHOP MARKET STALLS FROM POPULAR LOCAL BUSINESSES. BID IN THE LIVE AUCTION. GRAB SOME FRIENDS AND ENJOY A FUN NIGHT OUT WHILST SUPPORTING SUCH AN IMPORTANT CAUSE!

Brought to you by:

Proudly supported by:

Paul Sibley - 0403 325 423
Noel Susay - 0450 069 506

For further info or donations contact Hayley on hailstaylor@yahoo.com.au

Tickets available through www.ticketebo.com.au/pinkribbonshoppingchampers

Elsternwick Park Tennis Centre

Tennis for the Family

ELSTERNWICK PARK
TENNIS CENTRE

FREE TRIAL CALL 9531 3782

MUM

fitbit



Have fun and keep fit!
CardioTennis is a high intensity tennis workout for beginners to advanced players. Each 60 minute session is run with high tempo music and uses modified balls to increase rally length.



ladiestennis

A fun & challenging program designed specifically for ladies run by experienced Tennis Australia qualified coaches. It features 90 minutes of coaching followed by 30 minutes of supervised match play.

CHILDCARE

Need someone to watch the kids while you play?
EPTC provides a child-minding service from 9:15-12:00 every weekday morning.

DAD



ADULT GROUPS

Each lesson lasts 60 minutes and has a maximum ratio of 1:6 to create a small and personal learning environment. There are 3 class standards: Improver, Intermediate and Advanced.

Private Lessons

If you are looking for a more personal type of training, private lessons are for you. They are guaranteed to fast-track your tennis ability in the shortest period of time possible. Private lessons are available in a private (1:1) or semi private (1:2, 1:3 or 1:4) format.

KIDS



Tennis Whizz develops FUNDamental motor skills as well as literacy, numeracy, healthy behaviour and social development through a unique story telling approach. Ages: 3-5 yrs. old



Kids progress through 4 stages of modified equipment and learning: Blue, Red, Orange and Green. Guided by qualified Tennis Australia coaches, kids are encouraged to develop at their own pace, moving on to the next stage when they are ready. Ages: 4-11+ yrs. old



CHAMPIONS ARE MADE, NOT BORN.

2 WEEK TRIAL \$55

TERM 4 | SKILLS ACQUISITION PROGRAMS

Established in 2002, Football Star Academy is Australia's leading provider of youth football programs

YOUR LOCAL FSA PROGRAMS ARE AVAILABLE AT:

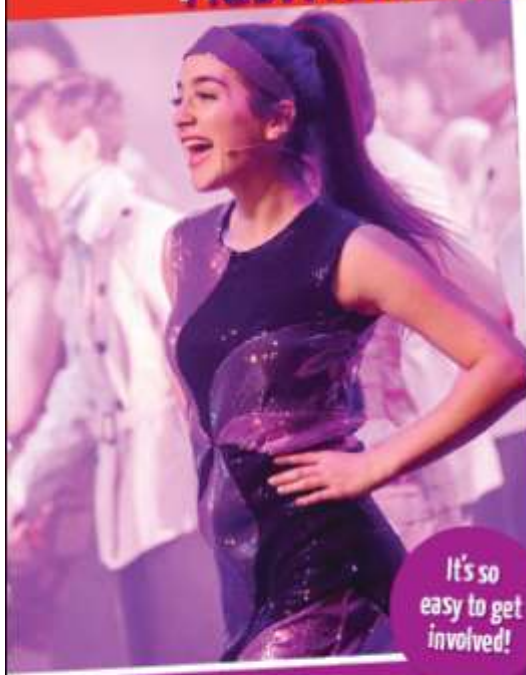
BRIGHTON, HAMPTON & MOORABBIN



SIGN UP TODAY AT footballstaracademy.com.au OR CALL 1300 372 300



JOIN US IN THE SPOTLIGHT AUDITIONS NOW OPEN



Fun, inspiring classes in drama and musical theatre for kids! From novice to advanced.

- Develop successful life skills like confidence, communication and teamwork.
• Great value - all weekly classes, workshops and costumes included. No registration fee.
• Perform on stage twice a year.
• 30 years of success.
• Highly qualified, experienced teachers.

CALL 8199 1644

to book a free, no obligation audition session.

It's so easy to get involved!



Convenient classes located in Brighton! +17 locations across metro Melbourne.

REMINDER TO PARENTS

School hats must be worn during Term 4.

If your child does not bring their hat, they will be moved to a shaded area during recess and lunch.

The uniform shop has supplies if you need. Thank you.

