

# THE INTERNATIONAL BACCALAUREATE (IB) PRIMARY YEARS PROGRAMME

Brighton Primary School was authorised as an IB World School towards the end of 2006, after successfully implementing the Primary Years Programme.

## WHAT IS THE PRIMARY YEARS PROGRAMME?

The IB Primary Years Programme (PYP) is for students in the primary years. It encompasses best practice and research from a range of international education systems. The PYP provides a curriculum framework with internationally recognised core learning areas of language, social studies, mathematics, arts, science and personal, social and physical education. The PYP is assessed against the Victorian Curriculum.

The PYP provides a school wide approach to learning and teaching from Prep to Grade 6. At the heart of the programme's philosophy is a commitment to structured, purposeful inquiry as the leading vehicle for learning.

### REFERENCES:

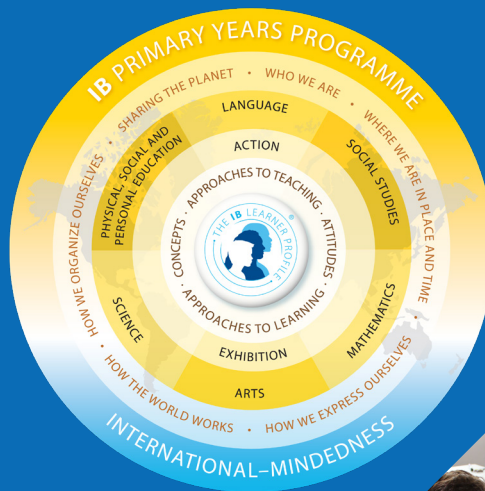
'Making the PYP happen: a curriculum framework for international primary education'. (2009). Cardiff, Wales: International Baccalaureate organization.

## WHY HAS BRIGHTON PRIMARY SCHOOL ADOPTED THE PYP?

Brighton Primary School is committed to continually improving the learning outcomes of its students. The PYP has a strong focus on the whole child: building academic, social, emotional and physical skills that will equip our students for the future.

## HOW DO STUDENTS LEARN?

Students will be taught through inquiry providing them with voice, choice and ownership of their learning. Through the development of key skills students will build learner agency. This allows them to ask questions, follow their passions, become critical thinkers and transfer and apply their learning to new contexts. Essentially: Learning how to learn.



## IB LEARNER PROFILE



The aim of all IB programmes is to develop internationally minded people who, recognising their common humanity and shared guardianship of the planet, help to create a better and more peaceful world.

As IB learners, we strive to be:

- > Inquirers
- > Knowledgeable
- > Thinkers
- > Communications
- > Principled
- > Open-Minded
- > Caring
- > Risk-Takers
- > Balanced
- > Reflective



## COUNCIL OF INTERNATIONAL SCHOOLS (CIS)

In 2005, the Council of International Schools (CIS) accredited Brighton Primary as an international school. The CIS is an independent international organisation which assesses applications from schools around the world seeking recognition for their high professional standards.

## WHAT IS INTERNATIONAL ACCREDITATION?

International Accreditation is an award of recognition to a school that has achieved CIS standards demonstrating international best practice in its Philosophy and Objectives, Curriculum, Management, Staff, Student Support, Resources and Student and Community Life.

## WHAT DOES INTERNATIONAL ACCREDITATION MEAN FOR BRIGHTON PRIMARY SCHOOL?

As an Internationally Accredited school, we make a formal and ongoing commitment to continually seek to improve our performance in all areas. Our high standards will ensure that we continue to attract and retain quality educators with a passion for highly effective learning and teaching.

## WHAT DOES IT MEAN FOR STUDENTS?

To achieve International Accreditation, the school is assessed against an extensive list of international standards. By meeting those standards, and committing to continuous improvement in each of them we ensure our students are provided with the highest quality education within a safe nurturing environment that fosters a love of learning.

## WHAT DOES IT MEAN FOR PARENTS?

International Accreditation gives parents confidence that the school is maintaining standards in accordance with international best practice. A process of continual self-assessment will ensure that our students become the adults of tomorrow who can thrive, contribute and think critically in an ever-changing world.

## HOW DO WE ENSURE OUR STANDARDS ARE MAINTAINED?

The school will be assessed every five years by a team from the CIS to ensure that we continue to meet International Accreditation standards. To maintain our Accreditation we must demonstrate that we are continually assessing and improving our performance in all areas.

## HOW DO THE COUNCIL OF INTERNATIONAL SCHOOLS AND PRIMARY SCHOOL YEARS PROGRAMME WORK TOGETHER?

The CIS evaluates the school in terms of how it operates, according to international standards, and the IB evaluates the school in terms of curriculum planning and delivery of the Primary Years Programme.



An Internationally Accredited School

[www.brighton.vic.edu.au](http://www.brighton.vic.edu.au)  
59 Wilson Street Brighton 3186  
ph: 03 9592 0177



## The International Baccalaureate (IB) Primary Years Programme



An Internationally Accredited School

BRIGHTON PRIMARY

*Our children, their future*